



Thank you for purchasing KOSO GP style speedometer, before operating the unit, please read the instruction thoroughly and retain it for the future reference.

Notice

1. The meter is apply for DC 12V.
2. For installation, please follow the steps described in manual. Any damage caused by wrong installation shall be imputed to the users.
3. To avoid the short circuit, please don't pull the wire when installing. Don't break or modify the wire terminal.
4. Do not disassemble or change any parts excluding the manual description.
5. The interior examination or maintenance should be executed by our professionals.

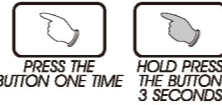
SYMBOL NOTE:

NOTE You could get the installation details from the information behind the mark.

▲ Some processes must be followed to avoid the affection caused by wrong installation.

▲ WARNING! Some processes must be followed to avoid damages to yourself or the public.

▲ CAUTION! Some processes must be followed to avoid the damage to the vehicle.



1-1 Accessory

1 Meter X 1	2 Digital speed signal sensor X 1	3 D6 X 5L mm magnet X 6	4 Connect terminal X 3
5 M8/ S type speed sensor bracket X 1	6 M10/ S type speed sensor bracket X 1	7 M5 Hexagon socket screw X 2	8 2.5 mm spanner X 1
9 Meter bracket X 1	10 Clamp X 1	11 Rubber X 1	12 M6 X 18L screw X 1
13 M4 X P0.7 nut X 2	14 M6 X P1.0 nut X 1	15 M4 washer X 2	16 M6 washer X 1
17 Aluminum bush X 1	18 Extended button X 1		

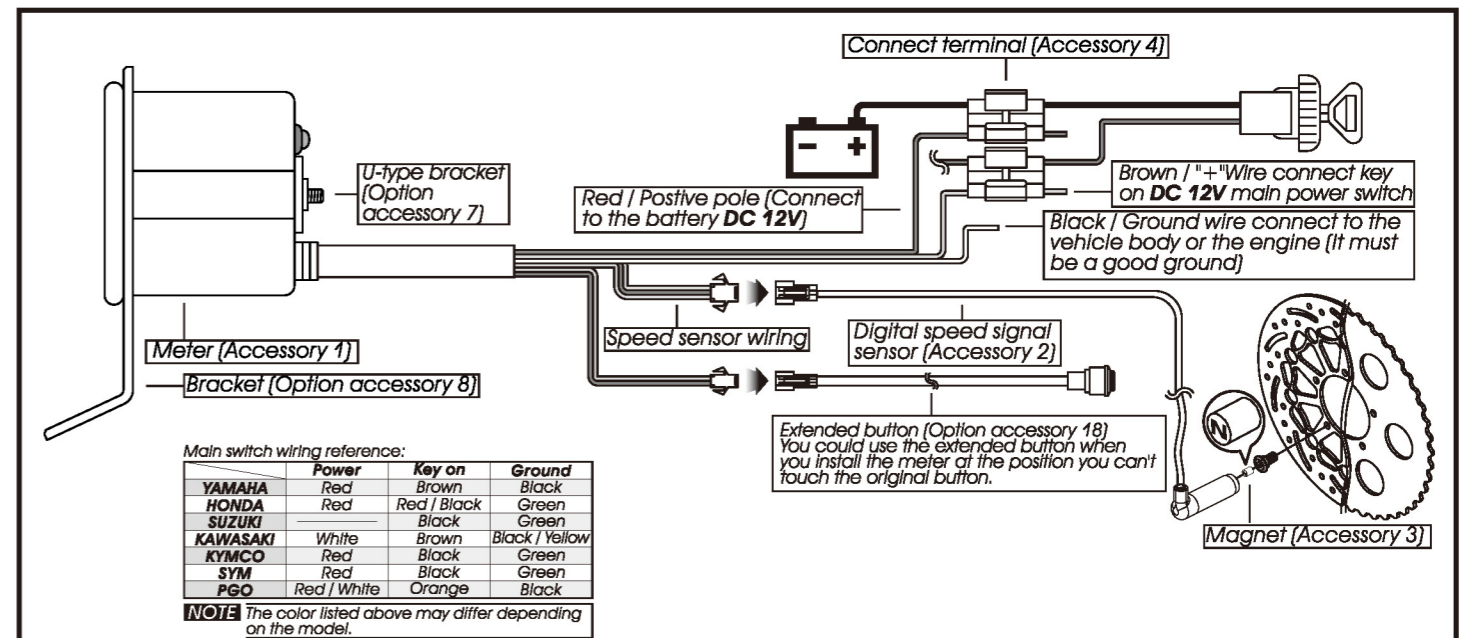
NOTE Please contact the local distributor if the items you open are not the same, with the above-listed one.

1-2 Option accessory

1 Disc magnet screw 5/16-18 X 22.4L M5 X P0.8 X 12L M6 X P1.0 X 12.6L M6 X P1.0 X 19.7L M6 X P1.0 X 24L M8 X P1.25 X 22.5L M8 X P1.25 X 27.5L M8 X P1.25 X 29L M10 X P1.25 X 28.3L	2 Active speed sensor	3 Digital speed signal sensor JIS TYPE α	4 Digital speed signal sensor JIS TYPE A
5 Digital speed signal sensor RUNNER	6 Digital speed signal sensor SR X-FIGHT BOOSTER	7 U-type meter bracket	8 Mirror hole meter bracket

NOTE Some of the option accessories may not sell. For the details, please contact the local distributor.

2-1 Wiring installation instructions



▲ The north (N) side of magnet must face to the sensor when installing.

NOTE When connecting the power wiring, please follow the instruction. If you connect the red & brown wiring in parallel will cause the meter work improperly.

2-2 Installation instructions

When installing, please follow the process.

1. Meter (Accessory 1)
2. Meter bracket (Accessory 9)
3. M4 washer X 2 (Accessory 15)
4. M4 X P0.7 nut X 2 (Accessory 13)
5. M6 X P1.0 screw (Accessory 14)
6. M6 washer (Accessory 16)

A Use the meter bracket (Accessory 9), handle bar clamp (Accessory 10), rubber (Accessory 11) and the nut to install the speedometer on the handle bar.

B Use the aluminum bush (Accessory 17) to install the speedometer on the handle bar stem.

2-3 Installation instructions

1. Put the magnet into the brake disc screw hole.
2. Install the S type sensor bracket.
3. Adjust the sensor bracket position to make sure that the sensor could face the magnet to prevent bad speed signal or no signal!
4. Install the speed sensor on the bracket.
5. Adjust the distance between sensor and magnet. We suggest you to make sure the distance is under 8 mm for catching good speed signal.

TIP

The more magnet sensor points are, the less the display interval is. when installing the magnet, please put the magnet with N-mark side face the outside and put them averagely to avoid wrong signal.

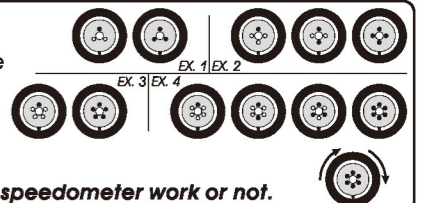
EX. 1: If your disk has 3 screws, you could install 1 or 3 magnets to catch the speed.

EX. 2: If your disk has 4 screws, you could install 1 - 2 or 4 magnets to catch the speed.

EX. 3: If your disk has 5 screws, you could install 1 or 5 magnets to catch the speed.

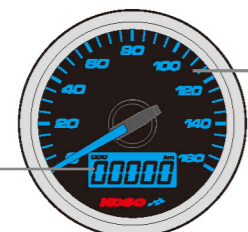
EX. 4: If your disk has 6 screws, you could install 1 - 2 - 3 or 6 magnets to catch the speed.

After finishing the magnet installation and sensor point setting, please move your tire to test the speedometer work or not.

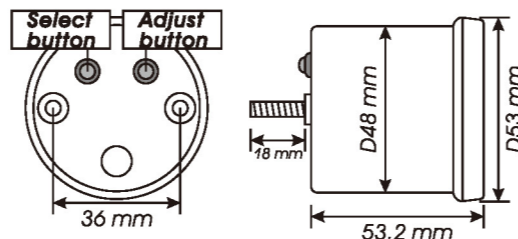


3-1 Basic function instruction

- Odo meter**
- Display range: 0~99999 km (mile), reset automatically after 99999 km (mile).
 - Display unit: 1 km (mile)
- Trip meter**
- Display range: 0~999.9 km (mile), reset automatically after 999.9 km (mile).
 - Display unit: 0.1 km (mile).



- Speedometer**
- Display range: 0~160 km/h (MPH)
 - Display unit: 1 km/h (MPH)



- Adjust button**
- In the main screen, Press the **Adjust button** to switch between odometer and trip meter.
 - In the trip meter screen, Press down the **Adjust button** for 3 seconds to reset the trip meter.

3-2 Function, setting instruction

● Speedometer	Display range: 0~160 km/h (MPH) Display unit: 1 km/h (MPH)	○ Tire circumference setting	Setting range: 300~2,500 mm Setting unit: 1 mm · Sensor point: 1~60
○ Display Internal	<0.5 second	● Effective voltage	DC12V
○ ODO meter	Display range: 0~99999 km (mile) reset automatically after 99999 km (mile). Display unit: 1 km (mile)	● Effective temperature range	-10~+60°C
○ Trip	Display range: 0~999.9 km (mile) reset automatically after 0~999.9 km (mile). Display unit: 0.1 km (mile)	● Meter standard	JIS D 0203
		● Meter size	D48 X 53.2 mm
		● Meter weight	Around 132.2 g

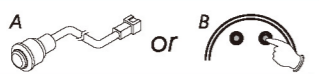
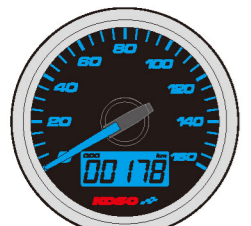
NOTE Design and specification are subject to change without notice!

NOTE If you enter the setting screen for 30 seconds and don't press the button, it will back to the main screen automatically.

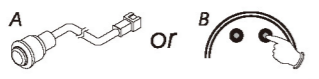
4-1 MAIN SCREEN FUNCTION SWITCH INSTRUCTION

4-1-1 Adjust button function instruction

- Press **Adjust button** once to switch function from ODO to trip.
 - In main screen, you could press down the **Adjust button** for 3 seconds to change the speed unit.
- NOTE** External switch can be used as Adjust button to change the function display



- Press **Adjust button** once to switch function from trip to ODO.
- Press and hold **Adjust button** for 3 second, the record in trip will be clear.



- The main screen.



4-1-2 Adjust+Select button function instruction (Tire circumference, sensor position)

- Press and hold both **Adjust and Select** buttons for 3 second to enter tire circumference setting screen. (Check section 4-2 for detail)
- NOTE** Do not enter into setup function when car is running



4-2 Tire circumference and sensor position setting

- EX: The tire circumference is 1300mm
 - Press **Select button** to move to the digital you would like to set. Current tire is setting by 1000mm circumference.
- NOTE** 1. Tire circumference setting range: 300~2,500mm
2. Adjust unit: per 1 mm



T.I.P

You could define the valve as the starting point and the terminal point to measure the wheel circumference with a measuring tape.

- Press **Adjust button** to select the digital you would like to set.
- EX: The circumference has been change from 1,000mm to 1,300mm.
- Press **Select button** to enter sensor point setting screen.



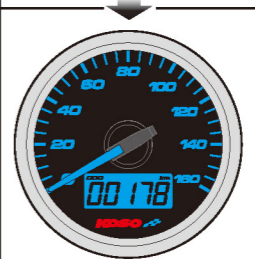
- EX: we would like set 16 sensor point on bike
 - Press **Adjust button** to select the digital you would like to set.
- NOTE** 1. Sensor point setting range: 1~60 point
2. Adjust range: 1 point.



- The sensor setting was change for 1P to 16P
- Press **Select button** to back to main screen.



- The main screen.



5 Trouble shooting

The following situation do not indicate malfunction of the meter. Please check the following before taking it in for repair.

Trouble	Check item	Trouble	Check item
The meter doesn't work when the power is on.	<ul style="list-style-type: none"> ● The power doesn't supply to the meter. → Please make sure the wiring is connected. The wiring and fuse are not broken. → The battery is broken or the battery is too old to supply enough power (DC 12V) to make the meter work. 	Speed does not appear or appear incorrectly.	<ul style="list-style-type: none"> ● Please make sure the speed sensor is connected correctly. ● Please check the tire-size setting. → please refer to the manual 4-1.
The meter shows wrong information.	<ul style="list-style-type: none"> ● Please check the voltage of your battery, and make sure the voltage is over DC 12V. 		

※If still can't solve the problems according to the steps above, please contact with distributors or us.